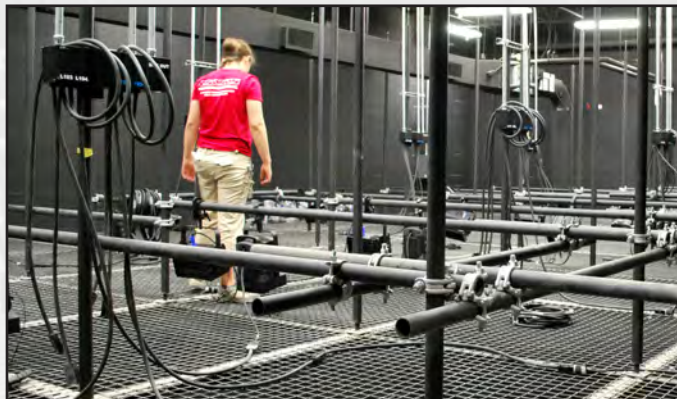


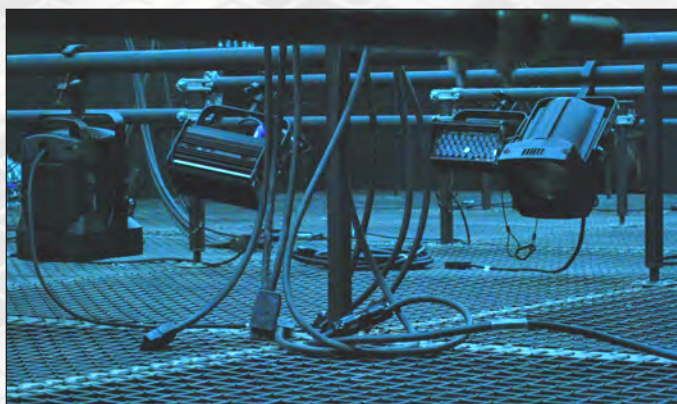
# Tgrid+<sup>®</sup>

Wire Grid



- Uses a solid wire woven mesh instead of the traditional woven wire rope
- Customized panels to fit any space
- Level walking surface reduces risk of tripping
- No gaps, minimal obstruction between panels
- Live load capacity of 20 psf (97.6 kg/m<sup>2</sup>) - higher psf also available with heavier gauge wire
- Modular panels designed for ease of assembly

- Suspension brackets both suspend the panels and tie them together
- Economic and durable construction
- Hanging system uses standard pipe and threaded rod for suspension
- Standardized wall brackets that are slotted for ease of installation
- All openings in the system may be designed to meet OSHA standards for floor openings



- Minimal structure means fewer obstructions to shoot light around
- Provides access to difficult areas as well as improved safety
- Entire assembly can be powder coated any color
- Items can be suspended from individual wire or groups of wire (within their capacity) without risk of damage
- 2" open space between wires provides for passing nom. 1.5" pipe through grid openings

A product by:



www.productionsunlimitedinc.com  
Toll Free: 844.579.7455

U.S. Patent 9,631,385  
Canadian Patent 2,933,878