

PRODUCTIONS UNLIMITED, INC.

# Tspacer

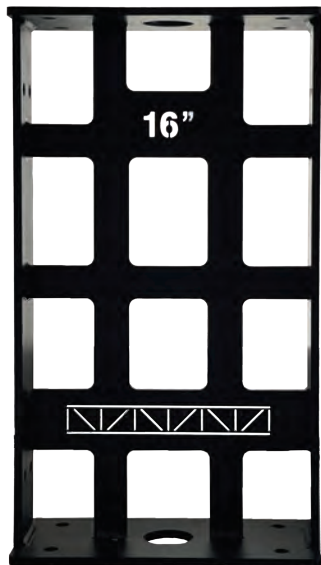
Counterweight Arbor Spacer

## About Tspacer

---

The Tspacer arbor riser from Productions Unlimited, Inc. is designed to provide an elevated surface for the loading of weights on a standard theatrical counterweight arbor where the bottom of that arbor is too low for safe loading at the loading bridge.

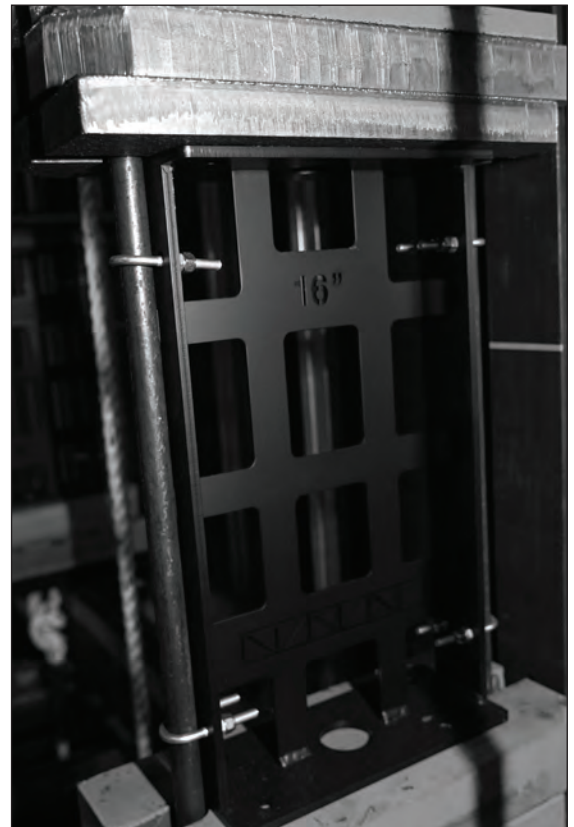
- Capable of raising the effective bottom of the arbor from 16"-48"
- Available in two standard heights of 16" and 24," which can be combined in pairs to reach a maximum height increase of 48"
- Engineered steel construction
- Designed to fit between rods of industry standard counterweight arbors
- Weight:
  - 16" = 12 lbs.
  - 24" = 14 lbs.
- Secures to rods with provided u-bolts
- Suitable to support up to 2,500 lbs. of counterweights safely
- Comes standard in a black powder coat finish, but other colors available on request
- **NOTE:** A spreader plate should be lowered to the top of the spacer prior to installing the first set of counterweights above

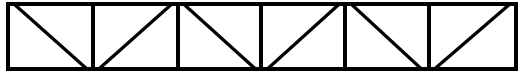


TS-16



TS-24

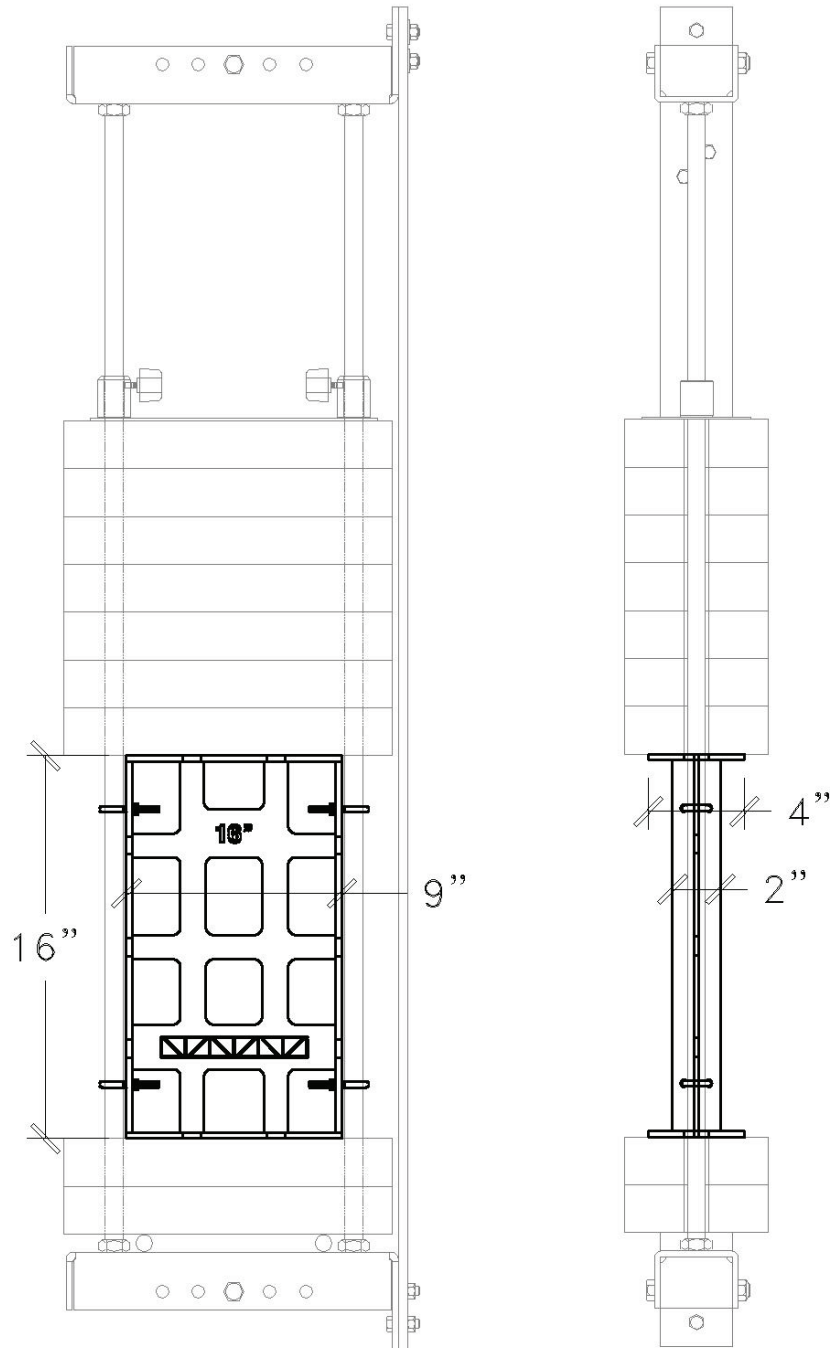




PRODUCTIONS UNLIMITED, INC.

# Tspacer

Counterweight Arbor Spacer



PRODUCTIONS UNLIMITED, INC.

[www.productionsunlimitedinc.com](http://www.productionsunlimitedinc.com)

Toll Free: 844.579.7455

SHOP  
ONLINE  
NOW

